



OPERATION MANUAL

SPARE PARTS SECTION

The following section covers the spare parts diagrams and lists that were current at the time this manual was originally printed. Due to continuous improvements of the machine, changes may be made at any time without notification.

HOW TO ORDER SPARE PARTS

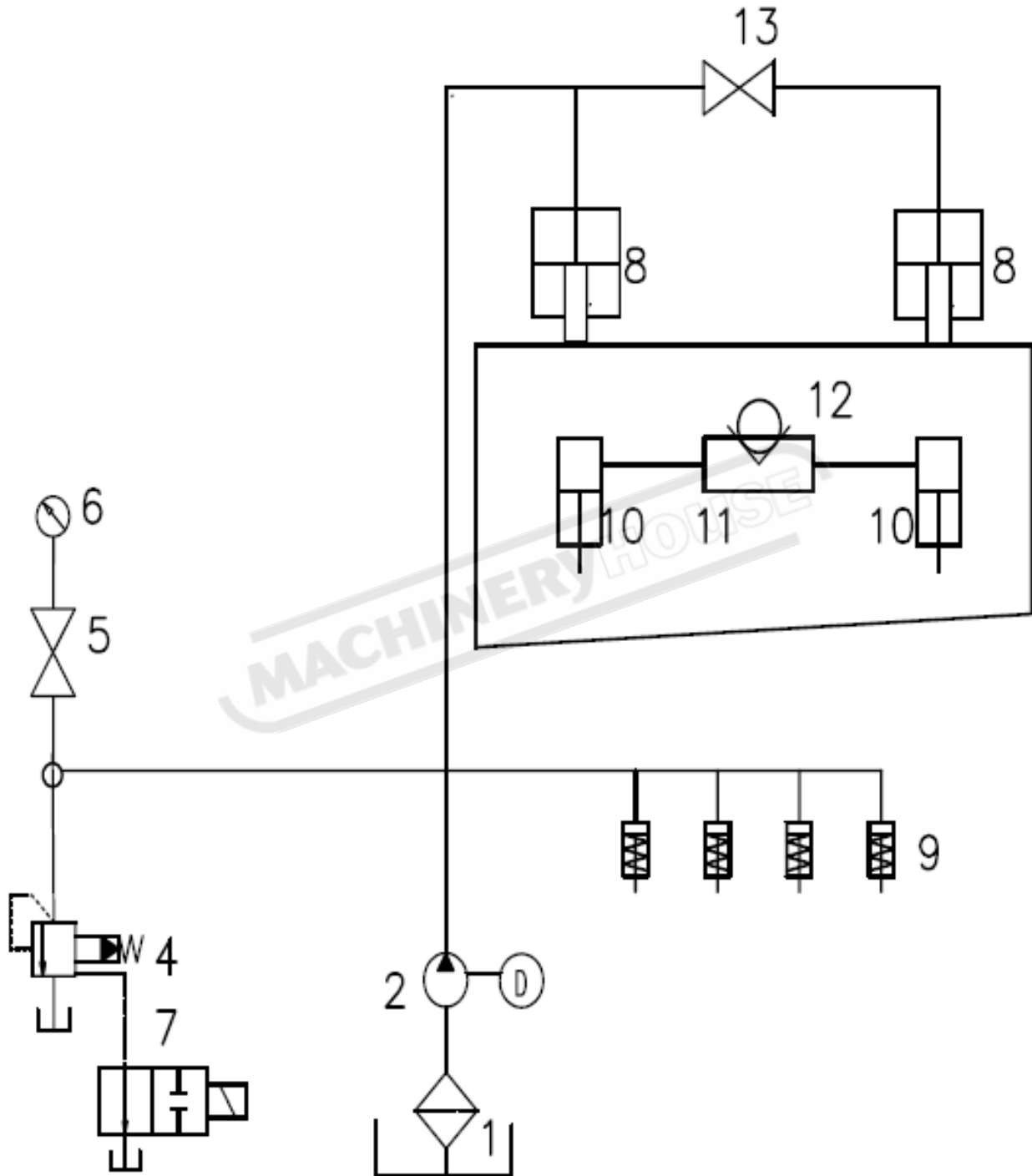
1. Have your machines **model number, serial number & date of manufacture** on hand, these can be found on the specification plate mounted on the machine
2. A scanned copy of your parts list/diagram with required spare part/s identified
3. Go to www.machineryhouse.com.au/contactus and fill out the inquiry form attaching a copy of scanned parts list.





OPERATION MANUAL

A. HYDRAULIC CIRCUIT FOR SG-2504E





OPERATION MANUAL

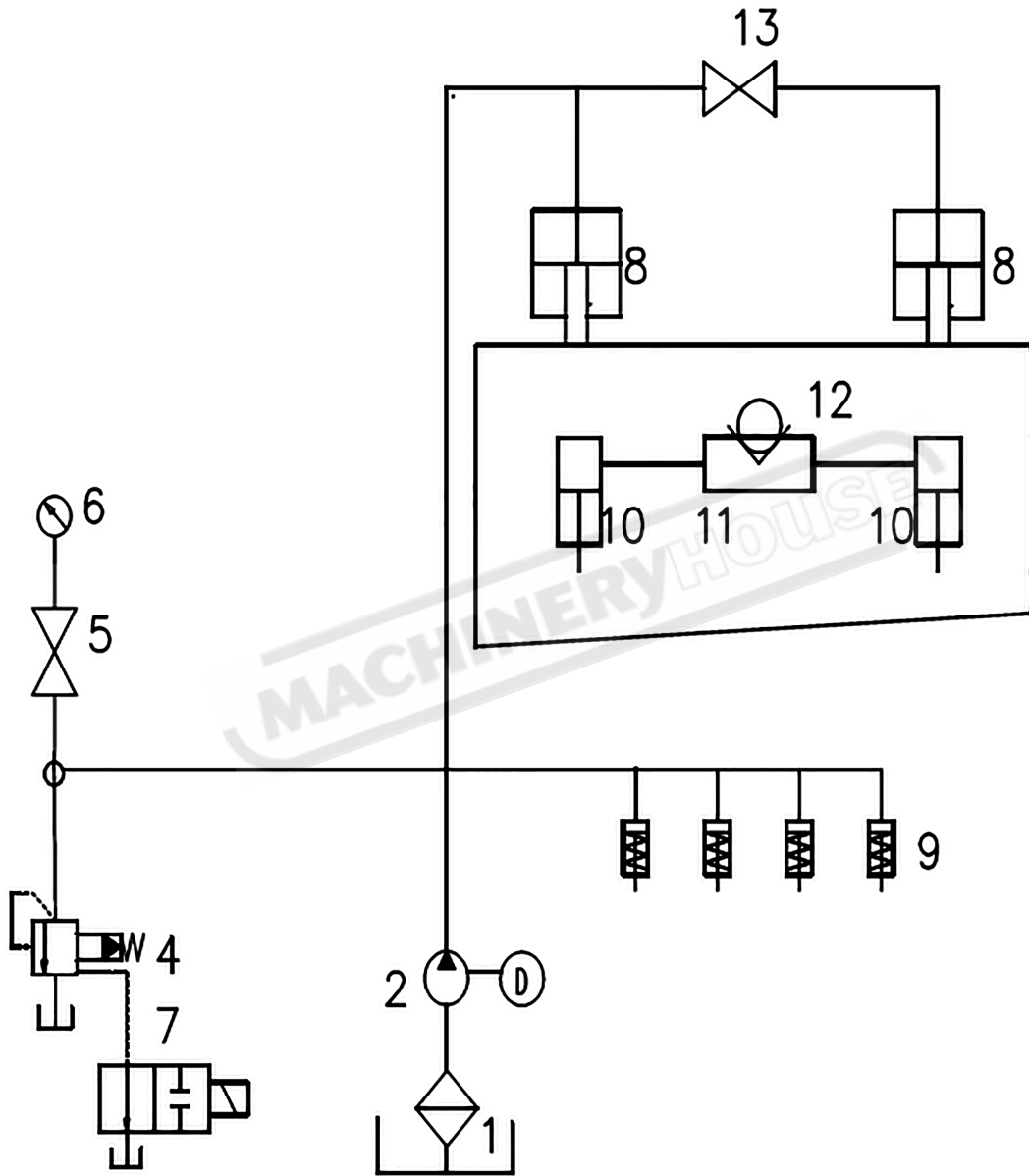
A. HYDRAULIC PARTS LIST FOR SG-2504E

No.	Name	Model	Qty.	Remarks
1	Oil Filter	WU-63*100-J	1	
2	Gear Pump	CPO-10-P-10R	1	
3				
4	Overflow Valve		1	
5	Pressure Meter Switch	KJF-L8H	1	
6	Pressure Meter	YN60-40	1	40MPa
7	Electromagnetic Exchange Valve	4WE6D61/EGZ4NZ5L	1	
8	Oil cylinder	4 x 2500	2	
9	Material Clamp Cylinder		10	
10	Return Oil Cylinder		2	
11	Accumulator	NXQ A-2.5	1	<6Mpa
12	Fill air valve	QXF-5	1	
13	Ball valve	CJXQ-F10L	1	



OPERATION MANUAL

A. HYDRAULIC CIRCUIT FOR SG-2506E & SG-3206E





OPERATION MANUAL

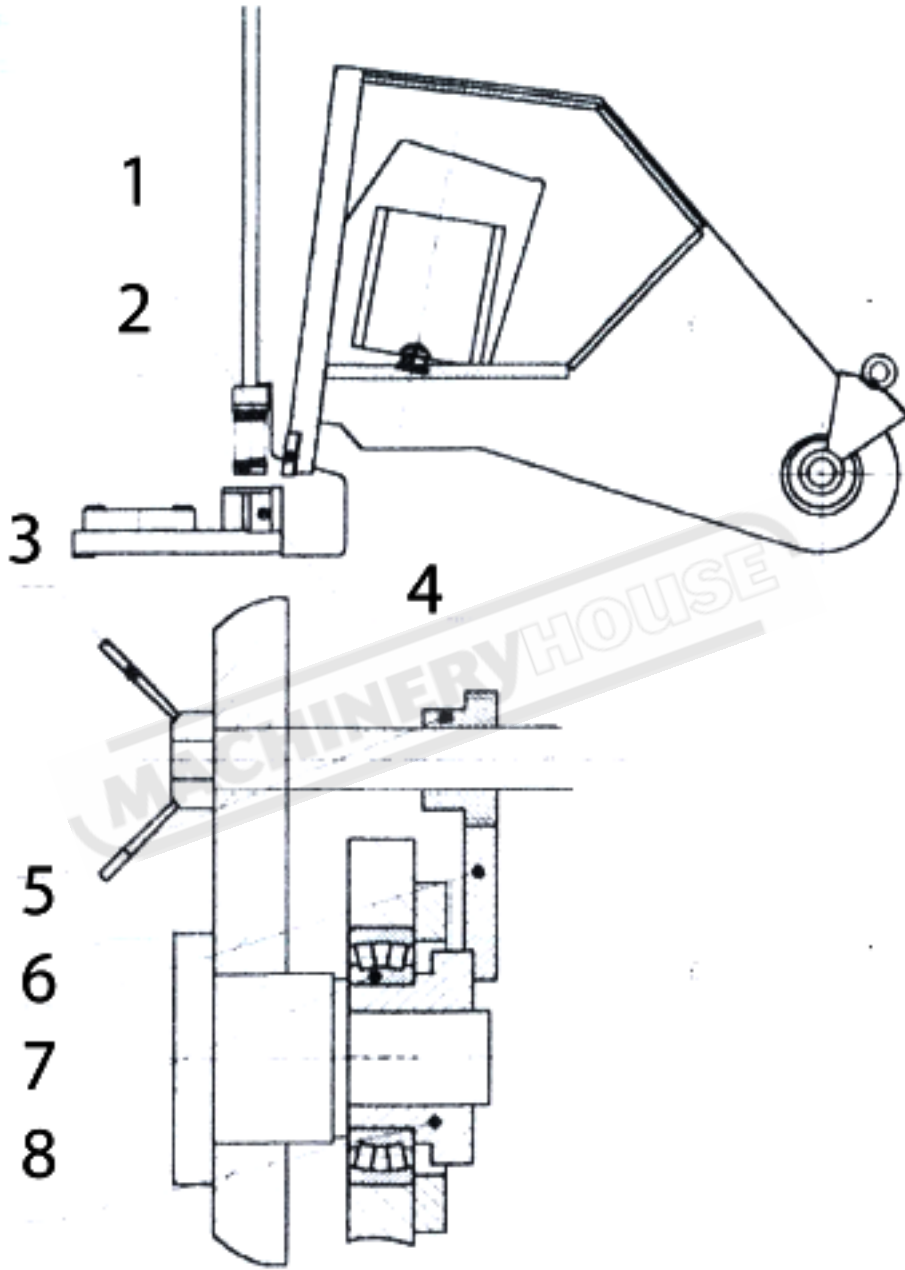
A. HYDRAULIC PARTS LIST FOR SG-2506E & SG-3206E

No.	Name	Model	Qty.	Remarks
1	Oil Filter	WU-63*100-J	1	
2	Gear Pump	CPO-25-P-10R	1	
3				
4	Overflow Valve		1	
5	Pressure Meter Switch	KJF-L8H	1	
6	Pressure Meter	YN60-40	1	40MPa
7	Electromagnetic Exchange Valve	4WE6D61/EGZ4NZ5L	1	
8	Oil cylinder	6 x 3200	2	
9	Material Clamp Cylinder		14	
10	Return Oil Cylinder		2	
11	Accumulator	NXQ A-4	1	<6Mpa
12	Globe Valve	XJF-10	1	
13	Ball valve	CJXQ-F10L	1	



OPERATION MANUAL

B. MATERIAL CLAMPS & BLADE GAP ADJUSTMENT



1 - Upper Blade

2 - Material Clamps

3 - Adjustment Handle

4 - Blade Movement Holder

5 - Support Cover

6 - Fan Shape Gear

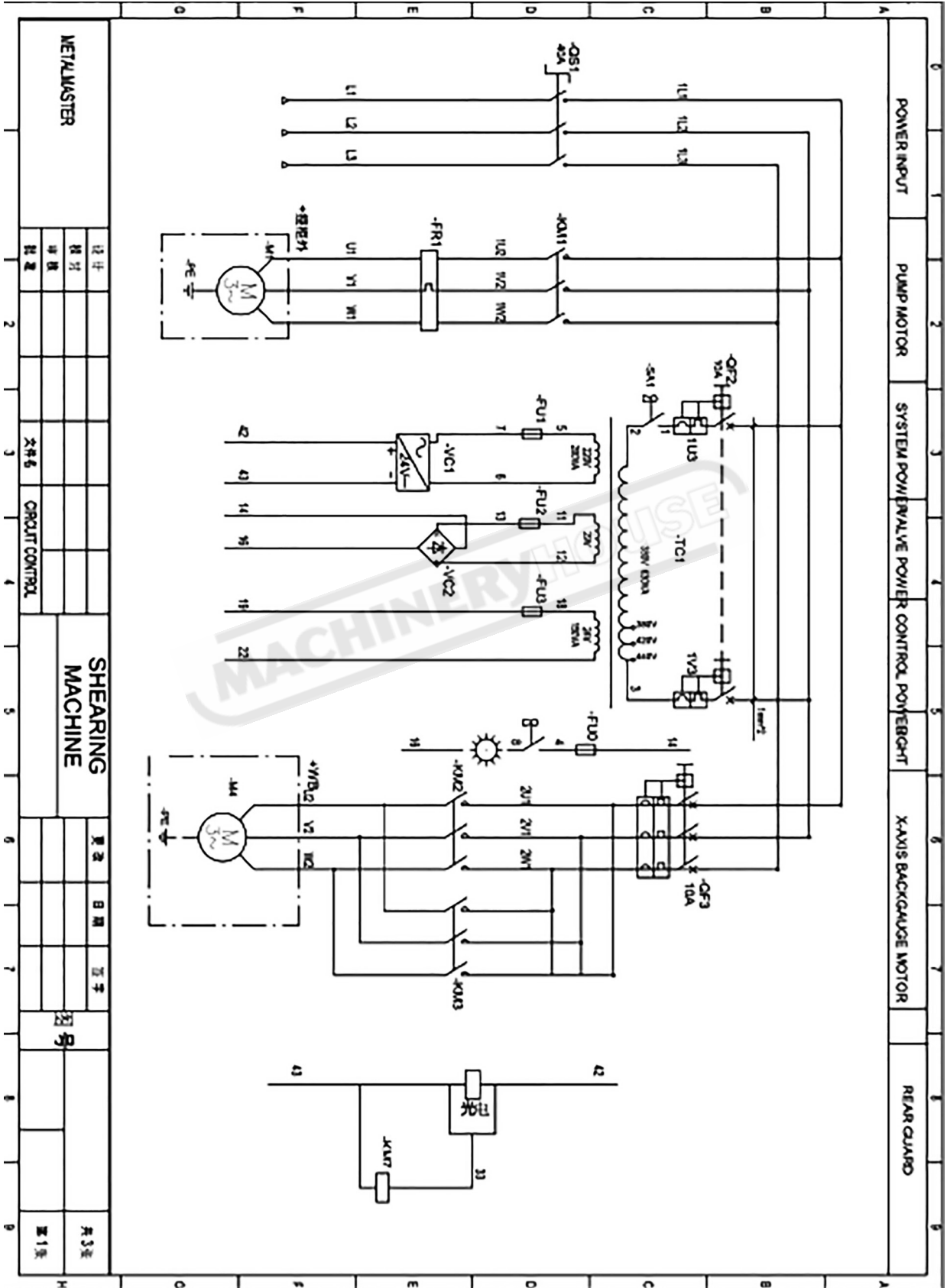
7 - Bearing

8 - Adjust Bush Gear



OPERATION MANUAL

C. ELECTRIC CIRCUIT DIAGRAM

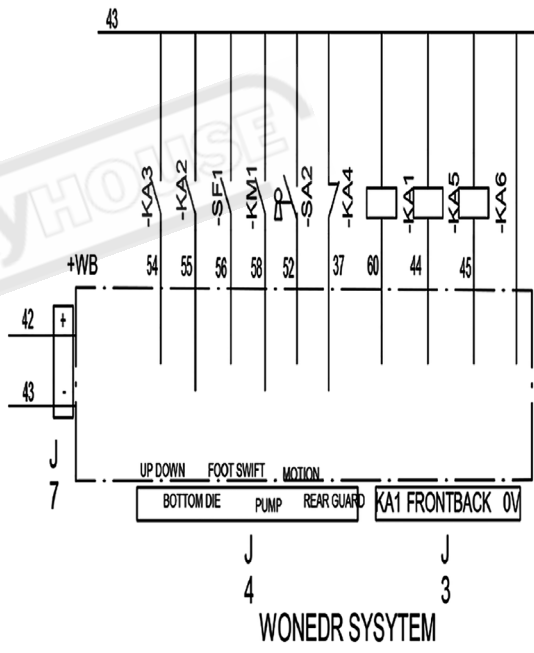
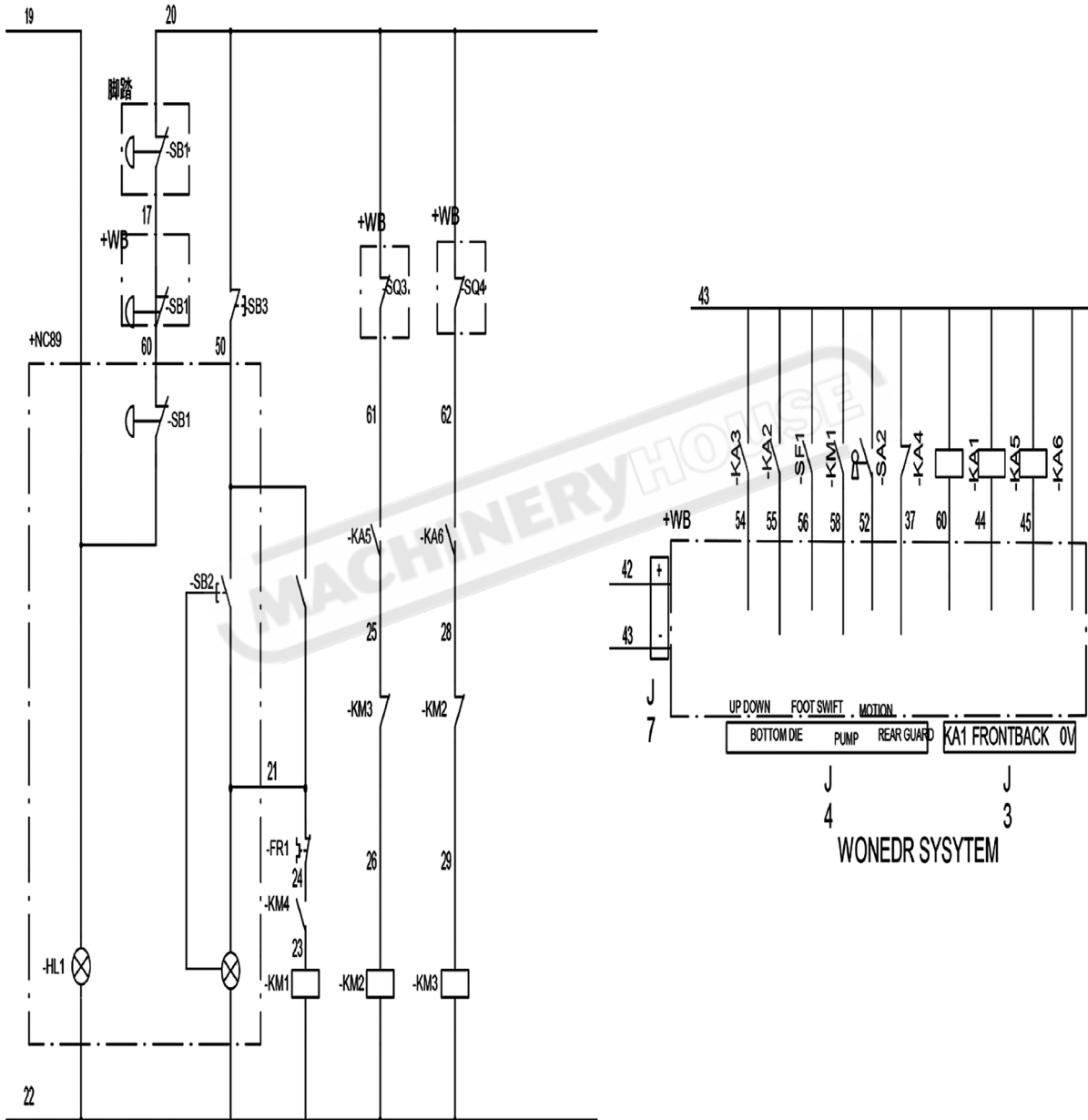




OPERATION MANUAL

C. ELECTRIC CIRCUIT DIAGRAM

0	1	2	3	4	5	6	7	8	9
POWER LIGHT	E-STOP	MAIN MOTOR CONTROL	X-AXIS CONTROL			WONEDR NC89 SYSTEM			





OPERATION MANUAL

C. ELECTRIC CIRCUIT DIAGRAM

0	1	2	3	4	5	6	7
	BOTTOM DIE PIONT		RESET REAR GUARD	UP DIE POINT		VALVE CONTROL	

